



Classic



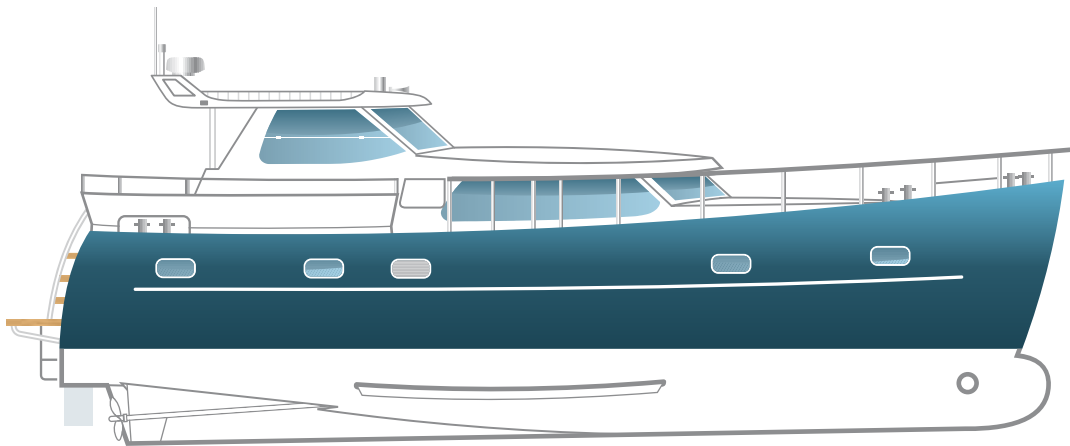
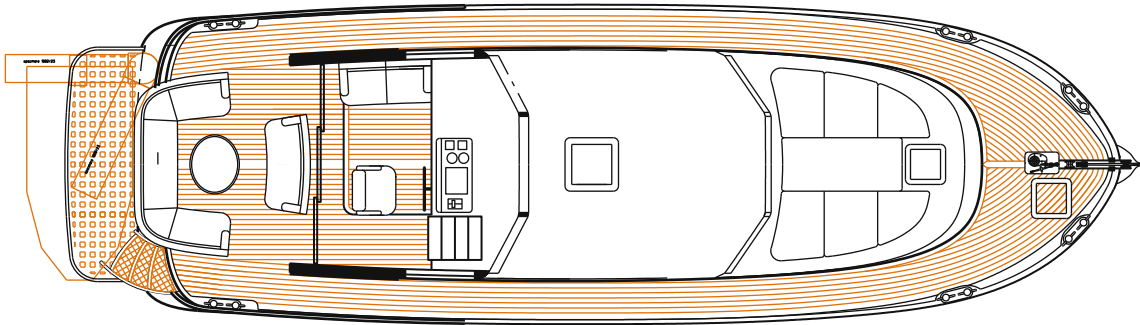
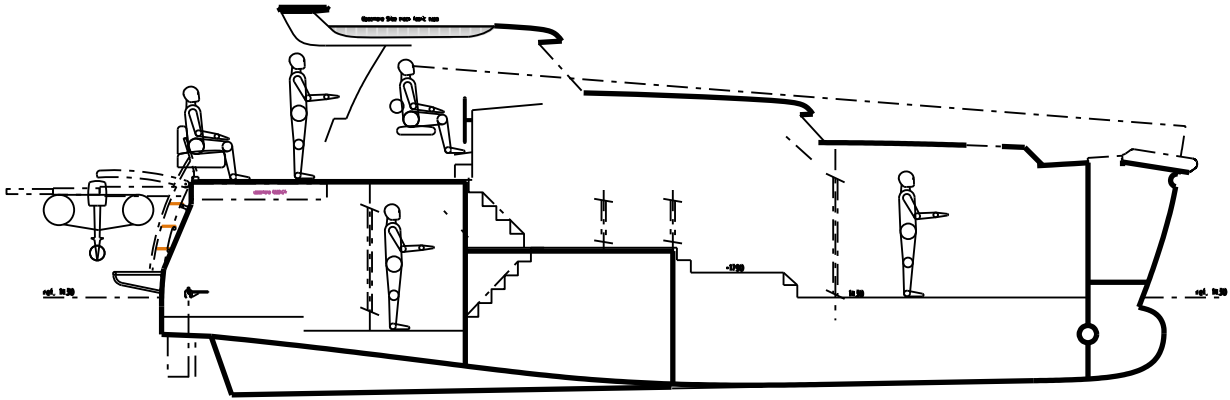
Interior design consist of 3 spacious cabins, main salon and kitchen, also it has additional storage room where it possible to arrange laundry room or place your diving equipment. the Sigo 50 Classic features a redesigned base hull which creates sufficient space for open-air entertaining. We can offer to our clients 3 different types of interior layouts. Indoor premises are notable for their spaciousness unusual for the vessel of this size.



Despite its moderate size vessel can serve as a comfortable permanent residence for 6-8 persons. Due to installed climate control and reliable sound and thermal isolation staying on board is comfortable at any weather conditions.



Design of the hull construction allows to reduce a fuel consumption to the minimum (with cruising speed consumption does not exceed 2 liters per nautical mile or 20 liters per hour). Sigo 50 project created to make your dreams about long-range voyage come true without limits providing you the comfort of real home.



technical data

Length max.: 14.98 m
 Length at waterline: 14.17 m
 Breadth: 4.78 m
 The width of max.: 4.85 m
 Draft: 1.43 m
 The rate of: 11.0 kn
 Fuel capacity: 5.35 m³
 Fresh water: 2.18 m³
 Sewage tanks: 1.31 m³
 Sleeps: 8 pers

Maximum range (including 25% reserve):
 at 9,5 knots 1180 nm
 at 9,0 knots 1450 nm
 at 6,5 knots 2690 nm

Equipment for yachts is chosen due to the following criteria: reliability, durability and long operating life, comfortable operation and big motoresource.

- Perkins Sabre Engines 2x86 HP.
- Generator Fisher Panda 12,7 KW.
- Chiller fan coil conditioning system with a diesel heater Marix (six fan coils).
- Bow thruster and anchor-mooring winch with remote control.
- Automatic fire extinguishing system Fogmaker.
- Automated system of marine power plants.
- Advanced Navigation System.
- Hydraulic gangway.
- Water maker.
- ... and other equipment from leading world manufacturers.



SIGO-50 *yachts*

The project is designed by **Ginton Naval Architects BV** (www.ginton.com). The interior design by **Brilliant Boats** (www.brilliantboats.net). She can be used for permanent residence, long range family voyages or as a representative vessel. The motorboat is equipped with the most modern ship systems and equipment that allows you to manage the boat easily and for a long-term and long range autonomous navigation. The yacht is designed according to **Recreational Craft Directive 94/25/EC** as amended by 2003/44/EC. **BOAT DESIGN CATEGORIES A – «Ocean».**

The construction of the yachts is being provided under the supervision of **Bureau VERITAS** classification society.



SIGO MARINE
App. 2, 44 Koblevska str.,
Odessa, Ukraine, 65023

tel./fax: +38 050 157 41 97
+38 048 234 78 93
+38 048 753 53 03

e-mail: boat@sigo.com.ua
www.sigo-yacht.com

